

FEED PRODUCTION SOFTWARE
FEEDO 2000



BY COMPUTER
for formulation, management and traceability

FEEDO 2000 PRODUCTION SOFTWARE

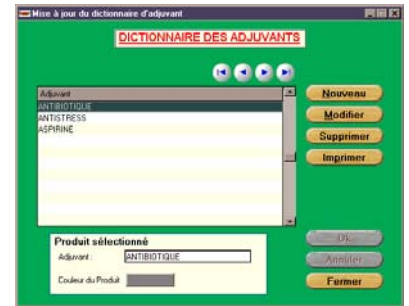
This is designed to control one or more automatic weighing controllers from a computer. It can store an unlimited number of formulas from 21 basic products, automatically manufacture several cycles of a formula while indexing distribution to the corresponding silo, manage the entry and exit of raw materials, calculate the cost of each formula and cost price to the kg, print the various operations after each production run with the formula and cycle numbers.

TABLES FOR VIEWING THE VARIOUS FUNCTIONS



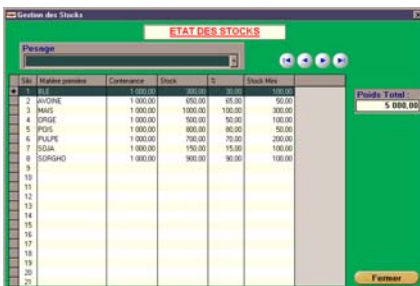
Each raw material is identified in a dictionary. A colour set by the user and a silo number is assigned to it when the system comes into operation.

In addition to the main dictionary, it is possible to list all the minor ingredients (additives) which could be incorporated manually in order to include them in the calculation of the cost price of the feeds.



When the user receives a raw material, they call up the "stock management" screen, then select the silo to be supplied. The remaining quantity along with the evaluated cost is then displayed. The user then just enters the quantity and the unit price to the kg to adjust the stock level and confirms the screen.

Each silo is identified by a colour and a name. The stocks of the various raw materials are displayed by an index and a percentage fill for each silo. 3 pages of tables are provided for viewing 21 products.



When all the silos have been assigned and viewed, a summary report can be produced which shows the filling ratio and the aggregate weight.

To program a formula, the user assigns a number and name together with the total weight required. They then retrieve the various ingredients required from the dictionary, copy them into the formula table, then enter the percentage or weight required and finally confirm their entry. It is possible to program more than 100% of the total weight, particularly in order to use additives.



SENSORS

The sensors (3 or 4) are mounted on articulated supports and placed under the raw materials receiving hopper, under a mixer or under a common support frame. They are delivered in series with a screened cable. They are connected to the PLC via a junction box and a screened extension lead.



THE 5/8 PLC

The 5/8 may be used stand-alone in manual mode and not connected to the PC.

In this case it controls all the functions for carrying out repeating cycles.

- storage of 8 formulas for 5 products
- execution of repeating cycles (max 99) of weighing, milling, blending and discharging
- delayed starting of weighing by built-in clock
- sequencer for uniform filling of the mixer
- tare, reset, waste correction
- programming of various items of data: flight weight, time delay, etc.

In automatic mode, the 5/8, fitted with an EEPROM can communicate with the PC where it operates as a slave and is used as a digital weight display.

FEEDO 2000 then manages all the elements.

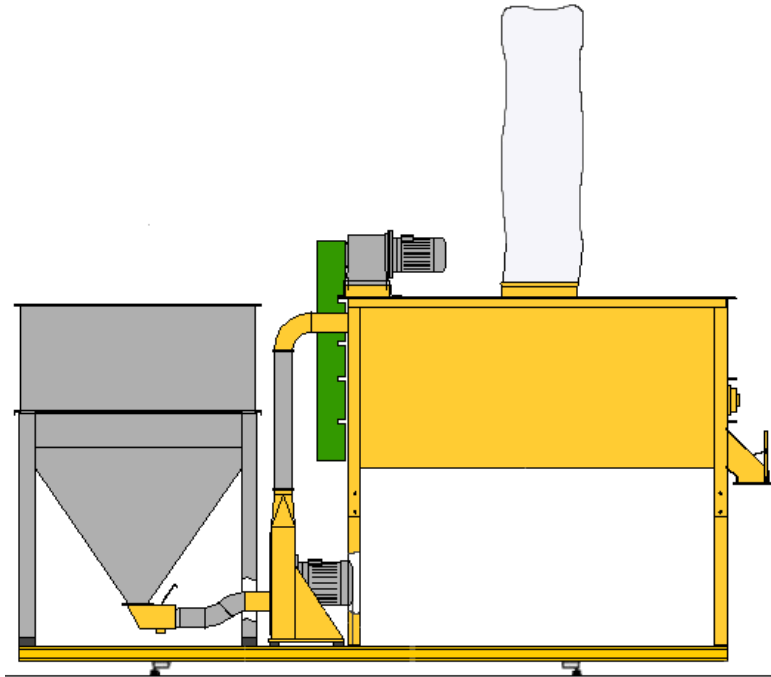


ELECTRICAL UNITS

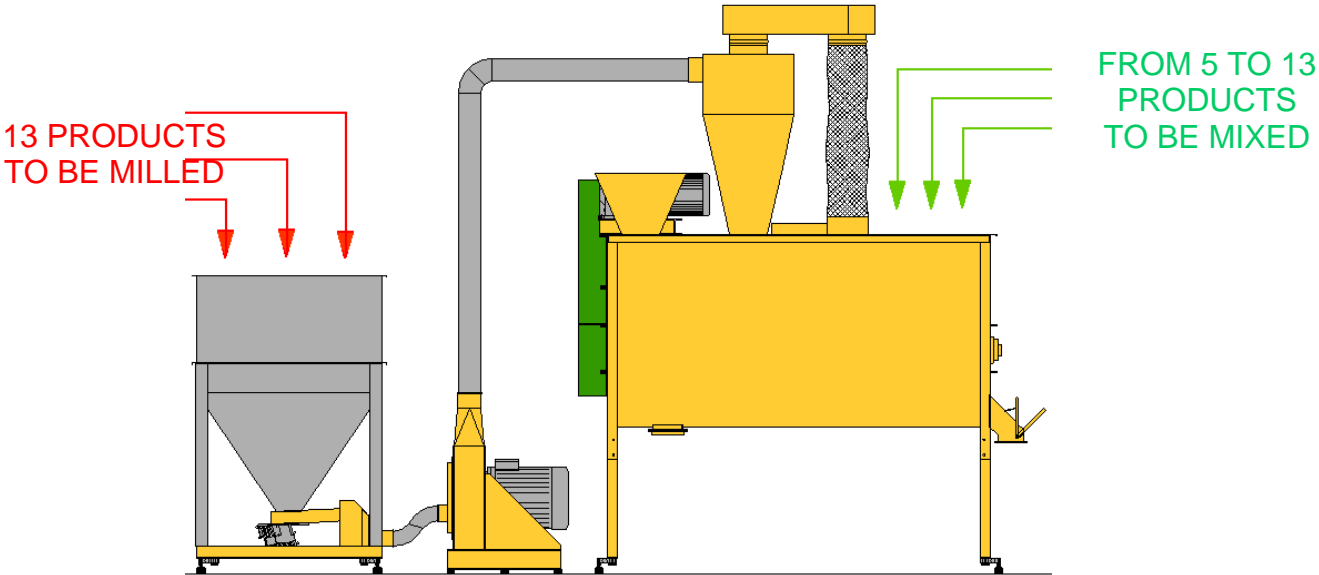
Integrates all the power controls for the installation, the various safety devices and automatic control systems.



EXAMPLES OF USE




WITH WEIGHING FRAME



WITH 2 SEPARATE WEIGHING SYSTEMS

The technical specifications may be subject to change without notice

	<p>47170 POUDENAS - FRANCE Tel.: +33 (0)5 53 65 73 55 Fax: +33 (0)5 53 97 33 05 e-mail: elevage@electra.fr Internet: www.electra.fr</p>
---	--