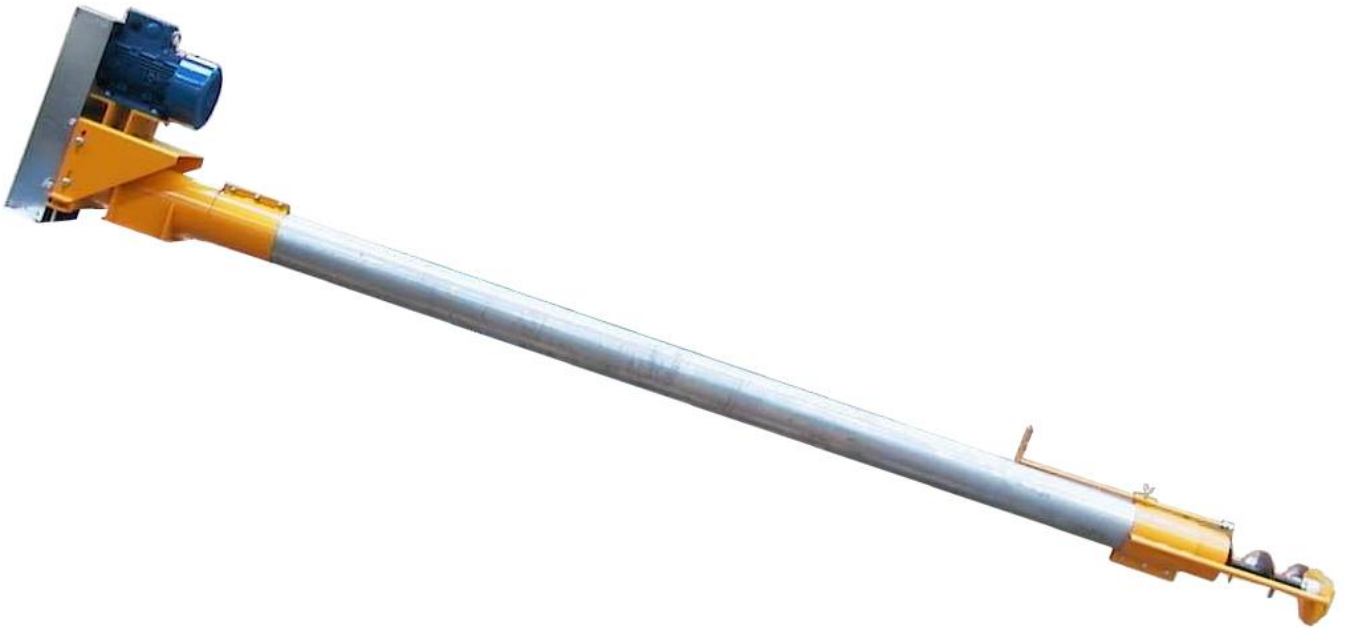




LIFTING AUGERS - HORIZONTAL AUGERS Ø150



For handling:
cereals, meals, pellets, etc.

SPECIFICATIONS

	LIFTING AUGERS	HORIZONTAL AUGERS
CONSTRUCTION	Head and foot in painted steel Galvanized tube	
		Intermediate bearings every 3 metres
FEED	flow control valves with Teflon bottom bearing and square end outlet, 160 x 160	square inlet hopper, 160 x 160 and square end outlet ,160 x 160
SPEED OF ROTATION	650 rpm	
DRIVE	By V-belts under housing	

LENGTH In Metres	MOTORISATION in kW	
	LIFTERS	HORIZONTAL
6	2.2	2.2
7	2.2	2.2
8	3	2.2
9	3	2.2
10	4	2.2
11	4	2.2
12	4	3
13 to 16		3
17 to 22		4
13 to 25		5

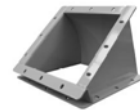
PERFORMANCE

150 to 200 quintals/hour
depending on the products transported,
and tilt angle for lifting auger

ACCESSORIES

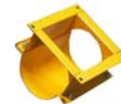
For the lifting augers:

- 2-quintal hopper
- square outlet angled at 30° or 45°, 160 x 160



For the horizontal augers:

- square 4-slope hopper, 400 x 400 - 160 x 160
- square intermediate inlet, 160 x 160
- Intermediate outlet with sliding flap controlled by
 - cable
 - air actuator
 - electric actuator
- Reduction hopper
- 350 x 160, square 160 x 160
- Suspension bracket for auger

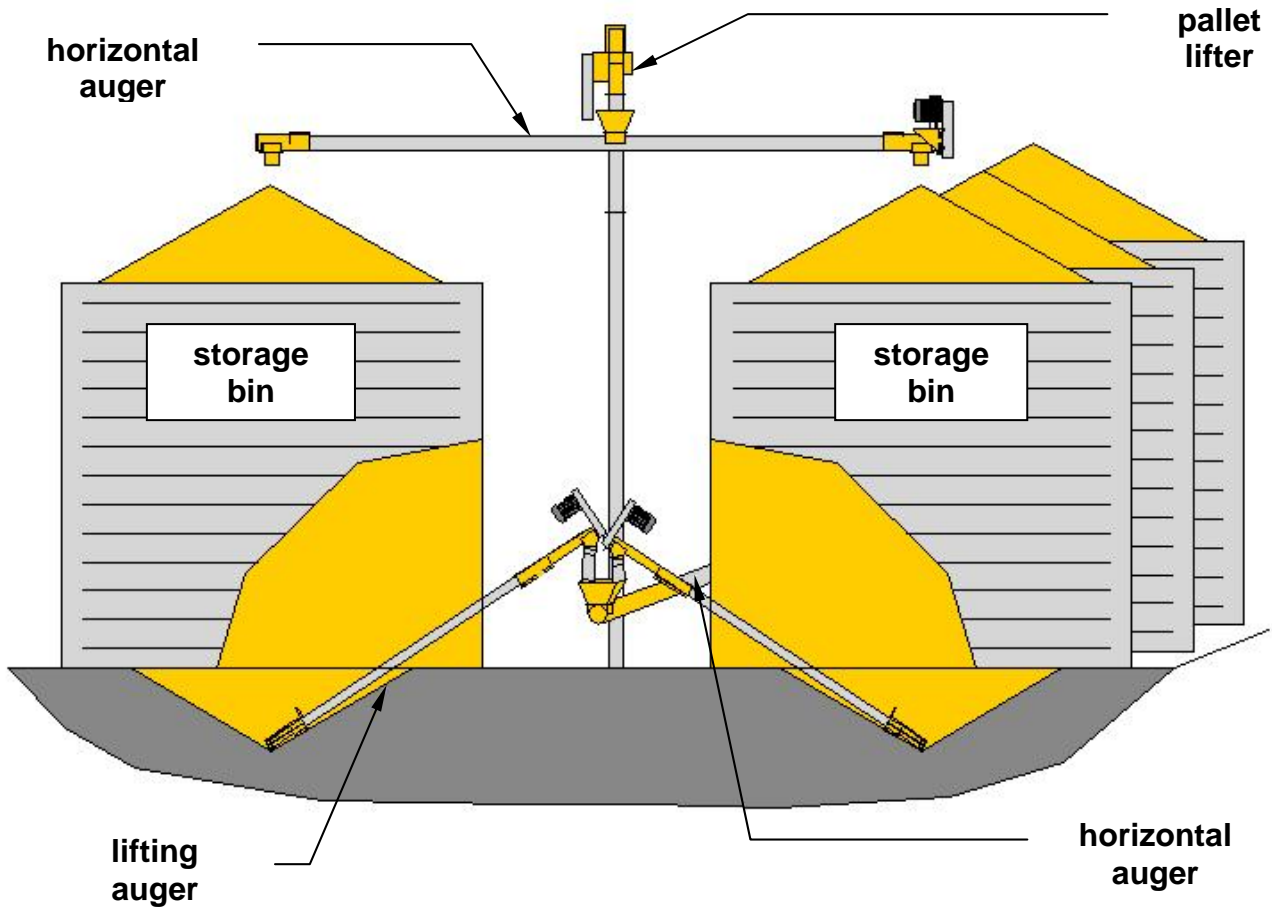


Common accessories:

- square two-directional hopper, 160 x 160
- Straight reducer, square 160 x 160 - Ø160
- Straight reducer and articulated elbow Ø160
- Connecting line Ø160



EXAMPLE OF USE



The technical specifications may be subject to change without notice



47170 POUDENAS - FRANCE

Tel.: +33 (0)5 53 65 73 55

Fax: +33 (0)5 53 97 33 05

e-mail: elevage@electra.fr

www.electra.fr